

*Direct expansion  
indoor unit for VRF*

# 4-way cassette

Q4DN-3-XY D28 - D140



TECHNICAL BULLETIN



SIZE	D28	D36	D45	D56	D71	D80	D90	D100	D112	D140	D160	D180
COOLING CAPACITY kW	2,8	3,6	4,5	5,6	7,1	8,0	9,0	10,0	11,2	14,0	16,0	18,0
HEATING CAPACITY kW	3,2	4,0	5,0	6,3	8,0	9,0	10,0	11,2	12,5	16,0	18,0	20,0

# General technical data

Model		Q4DN-3-XY D28	Q4DN-3-XY D36	Q4DN-3-XY D45	Q4DN-3-XY D56	
Power supply		1-phase, 220-240V, 50Hz				
Cooling <sup>1</sup>	Capacity	kW	2,8	3,6	4,5	5,6
		kBtu/h	9,6	12,3	15,4	19,1
	Power input	W	17	17	23	23
Heating <sup>2</sup>	Capacity	kW	3,2	4,0	5,0	6,3
		kBtu/h	10,9	13,7	17,1	21,5
	Power input	W	17	17	23	23
Fan motor type		DC motor				
Indoor coil	Number of rows	1	1	2	2	
	Tube pitch × row pitch	mm 18×10,72				
	Fin spacing and type	mm 1,2 Hydrophilic aluminum				
	Tube OD and type	mm Φ5 Inner-groove				
	Dimensions (L×H×W)	mm 2165×144×10,72				
	Number of circuits	4	4	8	8	
Air flow rate <sup>3</sup>	m <sup>3</sup> /h	790/740/691/641/591/542/492		840/787/733/680/626/573/519	840/791/741/692/642/593/543	
Sound pressure level <sup>4</sup>	dB(A)	30/29/28/27,5/27/26/25	30/29/28/27,5/27/26/25	33/32/31/30/29/28/27	33/32/31/30/29/28/27	
Sound power level	dB(A)	43/42/41/41/40/39/39	44/43/42/42/41/40/39	49/48/47/46/45/44/43	49/48/48/47/46/45/44	
Main body	Net dimensions <sup>6</sup> (W×H×D)	mm 840×204×840				
	Packed dimensions (W×H×D)	mm 940×250×940				
	Net/Gross weight	kg 18/20,5		kg 19,5/22		
Panel	Net dimensions (W×H×D)	mm 950×53×950				
	Packed dimensions (W×H×D)	mm 1020×90×1020				
	Net/Gross weight	kg 5,6/7,3				
Refrigerant type		R410A/R32				
Design pressure (H/L)		MPa 4,4/2,6				
Pipe connections	Liquid/Gas pipe	mm Φ6,35/Φ12,7				
	Drain pipe	mm OD Φ25				

## Notes:

- Indoor temperature 27°C DB, 19°C WB; outdoor temperature 35°C DB; equivalent refrigerant piping length 7.5m with zero level difference.
- Indoor temperature 20°C DB; outdoor temperature 7°C DB, 6°C WB; equivalent refrigerant piping length 7.5m with zero level difference.
- Air flow rate are from the highest speed to the lowest speed, total 7 rates for each model.
- Sound pressure level is from highest level to lowest level, total 7 levels for each model. Sound pressure level is measured 1.5m below the unit in a semi-anechoic chamber.
- The dimension is only the body size, excluding the size of the installation lug, connecting copper pipe, etc. For detailed dimensions, please refer to the installation manual.
- Exposed height of the panel after being installed on the ceiling.

# General technical data

Model			Q4DN-3-XY D71	Q4DN-3-XY D80	Q4DN-3-XY D90
Power supply			1-phase, 220-240V, 50Hz		
Cooling <sup>1</sup>	Capacity	kW	7.1	8.0	9.0
		kBtu/h	24.2	27.3	30.7
	Power input	W	31	41	43
Heating <sup>2</sup>	Capacity	kW	8.0	9.0	10.0
		kBtu/h	27.3	30.7	34.1
	Power input	W	31	41	43
Fan motor type			DC		
Indoor coil	Number of rows		2	2	2
	Tube pitch × row pitch		mm 18×10.72		
	Fin spacing and type		mm 1.2 Hydrophilic aluminum		
	Tube OD and type		mm Φ5 Inner-groove		
	Dimensions (L×H×W)		mm 2165×198×21.44		
	Number of circuits		11	11	11
Air flow rate <sup>3</sup>		m <sup>3</sup> /h	1000/943/886/829/772/715/658	1330/1239/1148/1057/965/874/783	1330/1239/1148/1057/965/874/783
Sound pressure level <sup>4</sup>		dB(A)	37/36/34/33/32/30/29	38/37/35/34/32/31/29	38/37/35/34/32/31/29
Sound power level		dB(A)	51/50/49/48/47/46/46	53/52/51/50/49/48/47	54/53/52/51/50/49/48
Main body	Net dimensions <sup>6</sup> (W×H×D)		mm 840×246×840		
	Packed dimensions (W×H×D)		mm 940×295×940		
	Net/Gross weight		kg 22/24.5		
Panel	Net dimensions (W×H×D)		mm 950×53×950		
	Packed dimensions (W×H×D)		mm 1020×90×1020		
	Net/Gross weight		kg 5.6/7.3		
Refrigerant type			R410A/R32		
Design pressure (H/L)		MPa	4.4/2.6		
Pipe connections	Liquid/Gas pipe		mm Φ9.52/Φ15.9		
	Drain pipe		mm OD Φ25		

## Notes:

- Indoor temperature 27°C DB, 19°C WB; outdoor temperature 35°C DB; equivalent refrigerant piping length 7.5m with zero level difference.
- Indoor temperature 20°C DB; outdoor temperature 7°C DB, 6°C WB; equivalent refrigerant piping length 7.5m with zero level difference.
- Air flow rate are from the highest speed to the lowest speed, total 7 rates for each model.
- Sound pressure level is from highest level to lowest level, total 7 levels for each model. Sound pressure level is measured 1.5m below the unit in a semi-anechoic chamber.
- The dimension is only the body size, excluding the size of the installation lug, connecting copper pipe, etc. For detailed dimensions, please refer to the installation manual.
- Exposed height of the panel after being installed on the ceiling.

# General technical data

Model			Q4DN-3-XY D100	Q4DN-3-XY D112	Q4DN-3-XY D140
Power supply			1-phase, 220-240V, 50Hz		
Cooling <sup>1</sup>	Capacity	kW	10,0	11,2	14,0
		kBtu/h	34,1	38,2	47,8
	Power input	W	54	61	89
Heating <sup>2</sup>	Capacity	kW	11,2	12,5	16,0
		kBtu/h	38,2	42,7	54,6
	Power input	W	54	61	89
Fan motor type			DC		
Indoor coil	Number of rows		2	2	3
	Tube pitch × row pitch		mm 18x10,72		
	Fin spacing and type		mm 1.2 Hydrophilic aluminum		
	Tube OD and type		mm Φ5 Inner-groove		
	Dimensions (L×H×W)		mm 2165×252×21.44		mm 2165×252×32.6
	Number of circuits		14	14	14
Air flow rate <sup>3</sup>		m <sup>3</sup> /h	1445/1363/1282/1200/1118/1037/955	1600/1497/1393/1290/1186/1083/979	1730/1624/1518/1412/1306/1200/1094
Sound pressure level <sup>4</sup>		dB(A)	39/38/37/36/35/34/33	41/40/38/37/36/34/33	43/42/40/39/37/36/34
Sound power level		dB(A)	54/53/52/51/50/50/49	57/56/55/54/53/52/51	58/57/56/55/54/53/52
Main body	Net dimensions <sup>6</sup> (W×H×D)		mm 840×288×840		
	Packed dimensions (W×H×D)		mm 940×335×940		
	Net/Gross weight		kg 24/26.5		kg 26.5/29
Panel	Net dimensions (W×H×D)		mm 950×53×950		
	Packed dimensions (W×H×D)		mm 1020×90×1020		
	Net/Gross weight		kg 5.6/7.3		
Refrigerant type			R410A/R32		
Design pressure (H/L)		MPa	4.4/2.6		
Pipe connections	Liquid/Gas pipe		mm Φ9.52/Φ15.9		
	Drain pipe		mm OD Φ25		

## Notes:

- Indoor temperature 27°C DB, 19°C WB; outdoor temperature 35°C DB; equivalent refrigerant piping length 7.5m with zero level difference.
- Indoor temperature 20°C DB; outdoor temperature 7°C DB, 6°C WB; equivalent refrigerant piping length 7.5m with zero level difference.
- Air flow rate are from the highest speed to the lowest speed, total 7 rates for each model.
- Sound pressure level is from highest level to lowest level, total 7 levels for each model. Sound pressure level is measured 1.5m below the unit in a semi-anechoic chamber.
- The dimension is only the body size, excluding the size of the installation lug, connecting copper pipe, etc. For detailed dimensions, please refer to the installation manual.
- Exposed height of the panel after being installed on the ceiling.

# General technical data

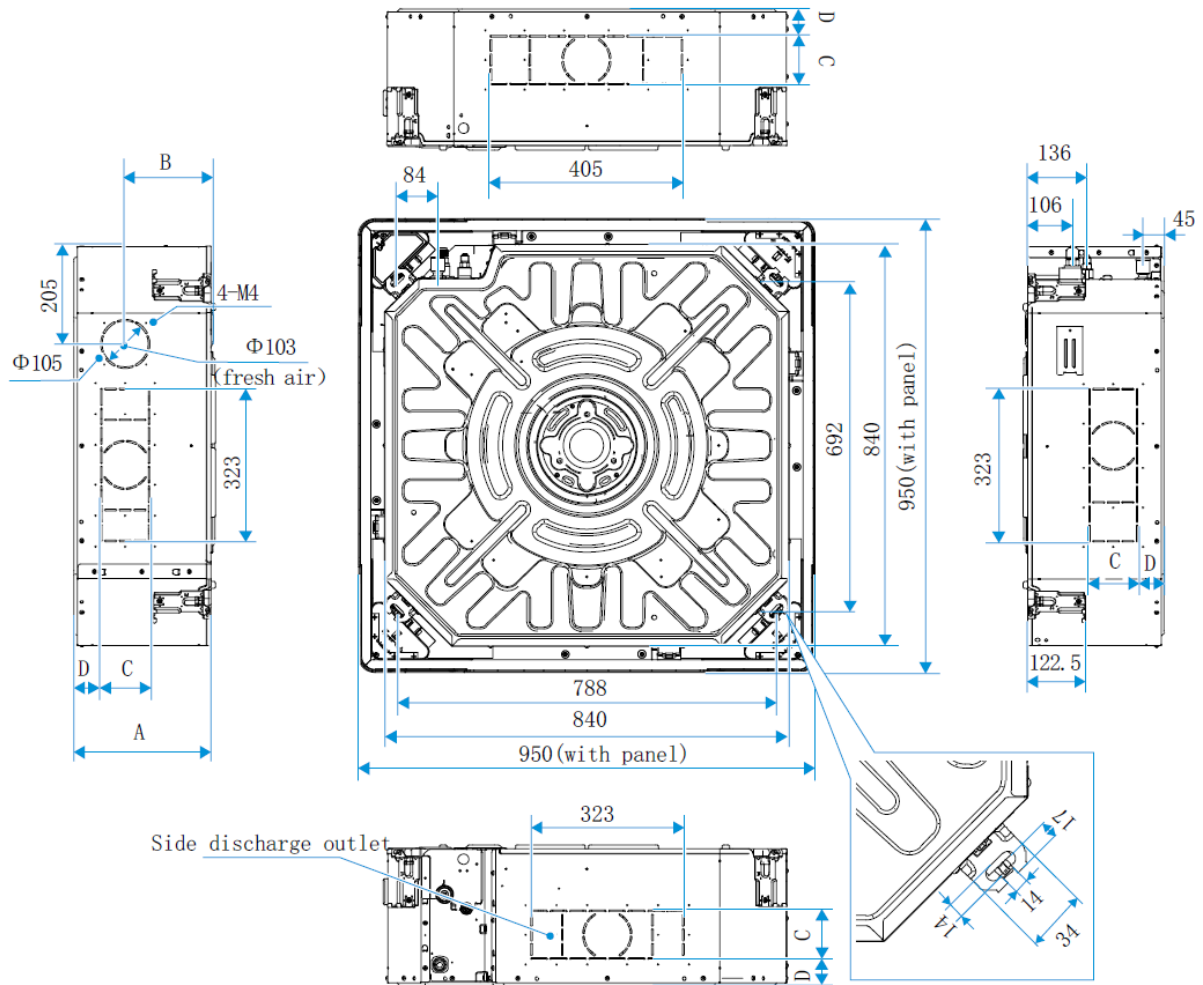
Model			Q4DN-3-XY D160	Q4DN-3-XY D180
Power supply			1-phase, 220-240V, 50Hz	
Cooling <sup>1</sup>	Capacity	kW	16,0	18,0
		kBtu/h	54.6	61.4
	Power input	W	110.0	145.0
Heating <sup>2</sup>	Capacity	kW	18.0	20.0
		kBtu/h	61.4	68.2
	Power input	W	110.0	145.0
Fan motor type			DC	
Indoor coil	Number of rows		3	3
	Tube pitch × row pitch		18×10.72	
	Fin spacing and type		1.2 Hydrophilic aluminum	
	Tube OD and type		Φ5 Inner-groove	
	Dimensions (L×H×W)		2165×144×10.72	2165×144×10.72
	Number of circuits		14	14
Air flow rate <sup>3</sup>		m <sup>3</sup> /h	2100/1900/1760/1630/1500/1380/1270	2300/2140/1960/1770/1600/1430/1270
Sound pressure level <sup>4</sup>		dB(A)	48/46/44/43/41/39/37	52/49/47/45/42/39/38
Sound power level		dB(A)	56/53/51/49/47/46/45	59/56/54/51/49/46/45
Main body	Net dimensions <sup>6</sup> (W×H×D)		950×300×950	950×300×950
	Packed dimensions (W×H×D)		1050×350×1050	1050×350×1050
	Net/Gross weight		32.6/37.2	32.7/37.3
Panel	Net dimensions (W×H×D)		1050×55×1050	1050×55×1050
	Packed dimensions (W×H×D)		1115×100×1115	1115×100×1115
	Net/Gross weight		7.4/9.7	7.4/9.7
Refrigerant type			R410A/R32	
Design pressure (H/L)		MPa	4.4/2.6	
Pipe connections	Liquid/Gas pipe		Φ9.52/Φ15.9	Φ9.52/Φ19.1
	Drain pipe		OD Φ25	

## Notes:

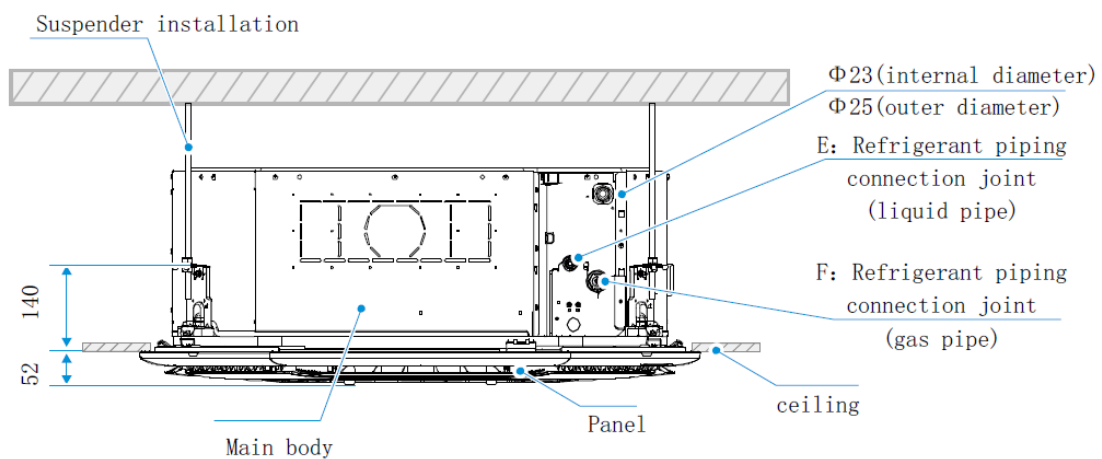
- Indoor temperature 27°C DB, 19°C WB; outdoor temperature 35°C DB; equivalent refrigerant piping length 7.5m with zero level difference.
- Indoor temperature 20°C DB; outdoor temperature 7°C DB, 6°C WB; equivalent refrigerant piping length 7.5m with zero level difference.
- Air flow rate are from the highest speed to the lowest speed, total 7 rates for each model.
- Sound pressure level is from highest level to lowest level, total 7 levels for each model. Sound pressure level is measured 1.5m below the unit in a semi-anechoic chamber.
- The dimension is only the body size, excluding the size of the installation lug, connecting copper pipe, etc. For detailed dimensions, please refer to the installation manual.
- Exposed height of the panel after being installed on the ceiling.

# Dimensions

Grandezze D28 ÷ D140 - (unit: mm)



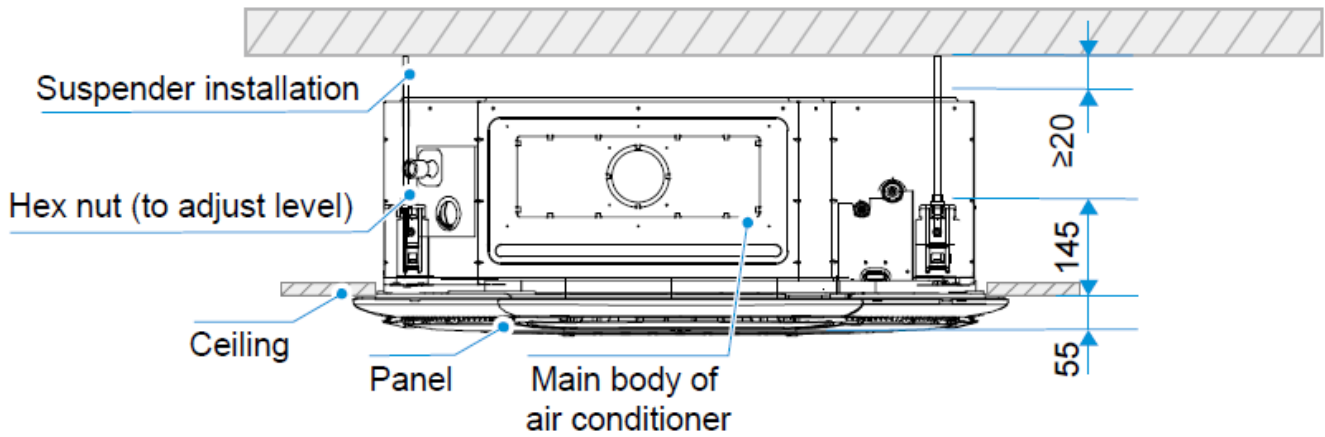
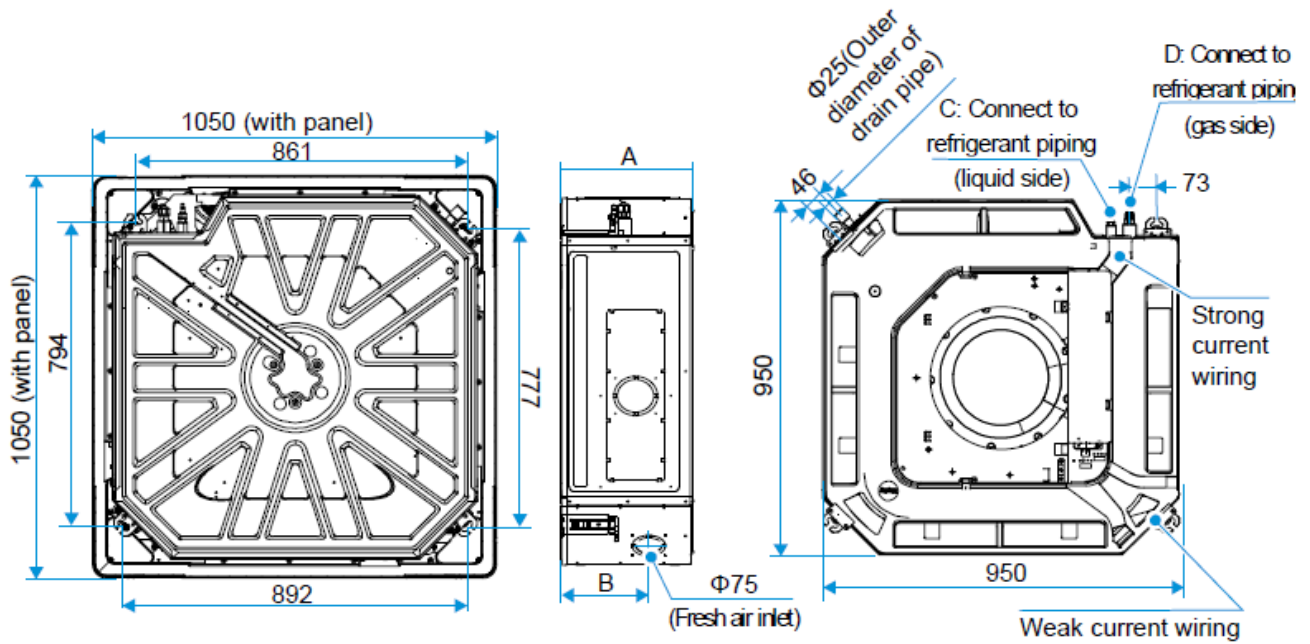
Four-1



MODEL	A	B	C	D	F	E
D28 ÷ D56	204	141	63	41.5	Φ12.7	Φ6.35
D71 ÷ D90	246	163	103	41.5	Φ15.9	Φ9.52
D100 ÷ D140	288	190	103	56.5	Φ15.9	Φ9.52

# Dimensions

Grandezze D160 ÷ D180 (unit: mm)



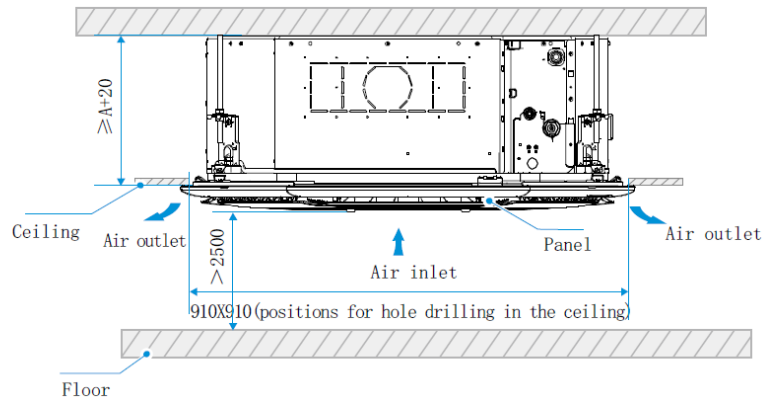
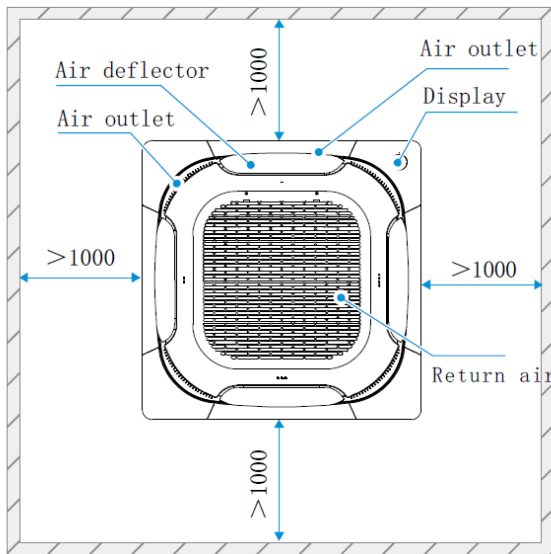
MODEL	A	B	C	D
D160	300	200	$\Phi 9.52$	$\Phi 15.9$
D180	300	200	$\Phi 9.52$	$\Phi 19.1$

## Placement Considerations

Unit placement should take account of the following considerations:

- Units should not be installed in the following locations:
  - A place filled with mineral oil, fumes or mist, like a kitchen.
  - A place where there are corrosive gases, such as acid or alkaline gases.
  - A place exposed to combustible gases and using volatile combustible gases such as diluent or gasoline.
  - A place where there is equipment emitting electromagnetic radiation.
  - A place where there is a high salt content in the air like a coast.
  - Do not use the air conditioner in an environment where an explosion may occur.
  - Places like in vehicles or cabin rooms.
  - Factories with major voltage fluctuations in the power supplies.
  - Other special environmental conditions.
- Units should be installed in positions where:
  - Ensure that the airflow in and out of the IDU is reasonably organized to form an air circulation in the room.
  - Ensure IDU maintenance space.
  - The nearer the drainage pipe and copper pipe are to the ODU, the lower the pipe cost is.
  - Prevent the air conditioner from blowing directly to the human body.
  - The closer the wiring to the power cabinet, the lower the wiring cost is.
  - Keep the air-conditioning return air away from the setting sun of the room.
  - Be careful not to interfere with the light tank, fire pipe, gas pipe and other facilities.
  - The IDU should not be lifted in the places like load-bearing beam and columns that affect the structural safety of the house.
  - The wired controller and the IDU should be in the same installation space; otherwise, the sampling point setting of the wired controller need to be changed.

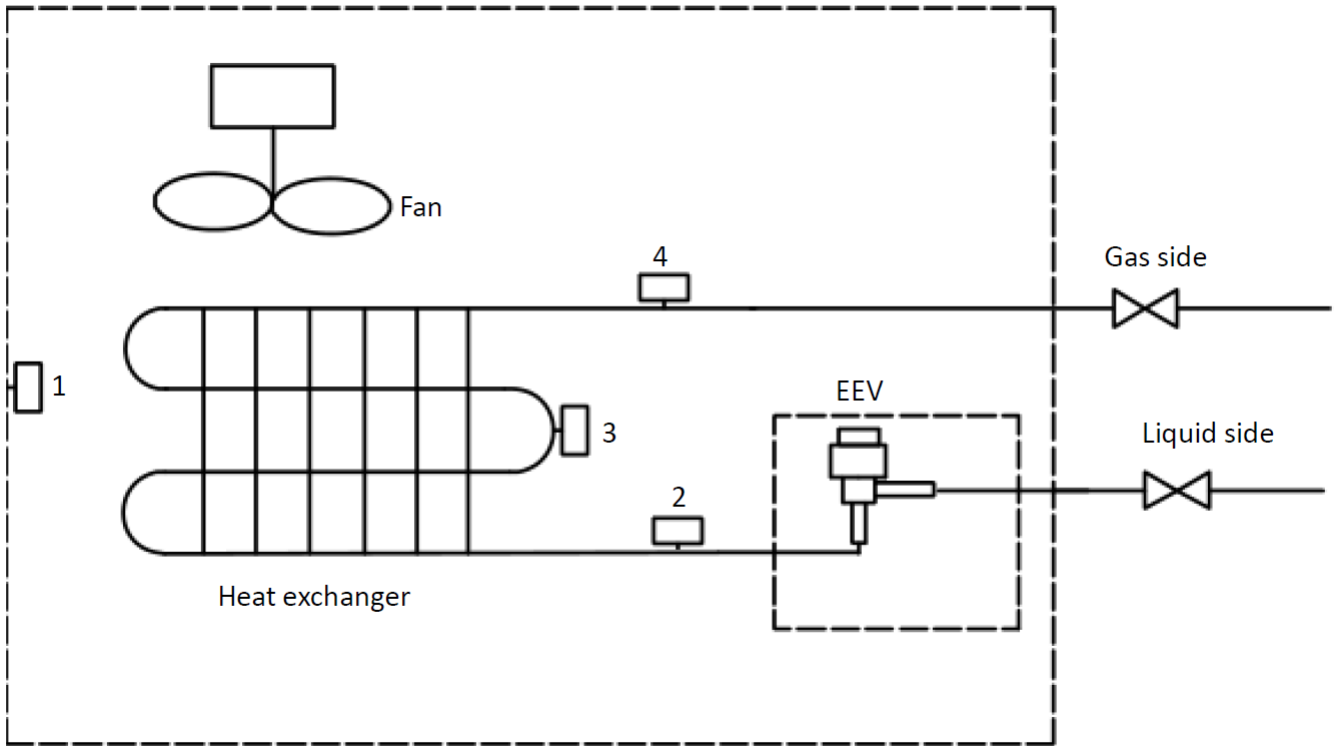
## Space Requirements



1. The centerline of the maintenance hole should be in the same position as the centerline of the indoor unit.
2. The dimensions of A are shown in Table 2.1



# Piping Diagram



## LEGEND

1	T1	Inlet Air Temp. Sensor
2	T2A	Liquid Pipe Temp. Sensor
3	T2	Middle Pipe Temp. Sensor
4	T2B	Gas Pipe Temp. Sensor



## Caution

- All installation , servicing and maintenance must be carried out by competent and suitably qualified, certified and accredited professionals and in accordance with all applicable legislation.
- Units should be grounded in accordance with all applicable legislation . Metal and other conductive components should be insulated in accordance with all applicable legislation.
- Power supply wiring should be securely fastened at the power supply terminals - loose power supply wiring would represent a fire risk.
- After installation, servicing or maintenance, the electric control box cover should be closed. Failing to close the electric control box cover risks fire or electric shock.
- The dotted lines indicate the field wiring or optional function
- D1D2 communication ports are used for group control communication. When connecting the group controller, the D1D2 port of the indoor units that are to be group controlled must be connected in daisy chain, and the group controller must be connected to the X1X2 port of one of the indoor units in the group control, and set to group control mode. In addition, D1D2 communication ports can also be connected to the central controller.

## Cooling Capacity Table

MODEL	Indoor air temperature (°C WB/DB)													
	14/20		16/23		18/26		19/27		20/28		22/30		24/32	
	TC	SC	TC	SC	TC	SC	TC	SC	TC	SC	TC	SC	TC	SC
<b>Q4DN-3-XY D28</b>	2.5	2.4	2.7	2.5	2.8	2.5	2.8	2.4	2.9	2.3	2.9	2.2	3.0	2.1
<b>Q4DN-3-XY D36</b>	3.2	3.1	3.4	3.1	3.6	3.2	3.6	3.0	3.7	3.0	3.8	2.8	3.9	2.7
<b>Q4DN-3-XY D45</b>	4.0	3.6	4.3	3.8	4.5	3.8	4.5	3.7	4.6	3.6	4.7	3.4	4.8	3.3
<b>Q4DN-3-XY D56</b>	5.0	4.5	5.3	4.6	5.6	4.7	5.6	4.6	5.7	4.5	5.8	4.2	6.0	4.1
<b>Q4DN-3-XY D71</b>	6.3	5.7	6.7	5.8	7.0	5.9	7.1	5.8	7.2	5.6	7.4	5.4	7.6	5.2
<b>Q4DN-3-XY D80</b>	7.1	6.6	7.6	6.7	7.9	6.8	8.0	6.6	8.1	6.4	8.3	6.1	8.5	5.8
<b>Q4DN-3-XY D90</b>	8.0	7.2	8.5	7.4	8.9	7.5	9.0	7.3	9.1	7.1	9.4	6.8	9.6	6.5
<b>Q4DN-3-XY D100</b>	8.9	8.1	9.5	8.4	9.9	8.4	10.0	8.2	10.1	7.9	10.4	7.6	10.6	7.2
<b>Q4DN-3-XY D112</b>	9.9	9.1	10.6	9.3	11.1	9.4	11.2	9.2	11.3	8.9	11.6	8.4	11.9	8.1
<b>Q4DN-3-XY D140</b>	12.4	11.0	13.2	11.4	13.8	11.5	14.0	11.3	14.2	11.0	14.5	10.5	14.9	10.1
<b>Q4DN-3-XY D160</b>	14.2	12.6	15.1	13.0	15.8	13.2	16.0	12.9	16.2	12.5	16.6	12.0	17.0	11.5
<b>Q4DN-3-XY D180</b>	15.9	14.1	17.0	14.7	17.8	14.8	18.0	14.5	18.2	14.1	18.7	13.5	19.1	12.9

Abbreviations:

TC: Total capacity (kW)

SC: Sensible capacity(kW)

Notes:

1.Shaded cells indicate rating condition.

## Heating Capacity Table

MODEL	Indoor air temperature (°C DB)					
	16	18	20	21	22	24
	TC	TC	TC	TC	TC	TC
<b>Q4DN-3-XY D28</b>	3.4	3.4	3.2	3.1	3.0	2.8
<b>Q4DN-3-XY D36</b>	4.2	4.2	4.0	3.8	3.8	3.5
<b>Q4DN-3-XY D45</b>	5.3	5.3	5.0	4.8	4.7	4.4
<b>Q4DN-3-XY D56</b>	6.7	6.6	6.3	6.1	5.9	5.5
<b>Q4DN-3-XY D71</b>	8.5	8.4	8.0	7.8	7.5	7.0
<b>Q4DN-3-XY D80</b>	9.5	9.5	9.0	8.7	8.5	7.8
<b>Q4DN-3-XY D90</b>	10.6	10.5	10.0	9.7	9.4	8.8
<b>Q4DN-3-XY D100</b>	11.9	11.8	11.2	10.9	10.5	9.8
<b>Q4DN-3-XY D112</b>	13.3	13.1	12.5	12.1	11.8	10.9
<b>Q4DN-3-XY D140</b>	17.0	16.8	16.0	15.5	15.0	13.9
<b>Q4DN-3-XY D160</b>	19.1	19.1	18.0	17.4	16.9	15.8
<b>Q4DN-3-XY D180</b>	21.3	21.3	20.0	19.4	18.8	17.5

Abbreviations:

TC: Total capacity (kW)

Notes:

1.Shaded cells indicate rating condition.

# Electrical characteristics

MODEL	Power supply					Indoor fan motors		
	Hz	Volts	Min. volts	Max. volts	MCA	MFA	Rated motor output (kW)	FLA
<b>Q4DN-3-XY D28</b>	50	220-240	198	264	0.51	15	0.045	0.41
<b>Q4DN-3-XY D36</b>	50	220-240	198	264	0.51	15	0.045	0.41
<b>Q4DN-3-XY D45</b>	50	220-240	198	264	0.59	15	0.045	0.47
<b>Q4DN-3-XY D56</b>	50	220-240	198	264	0.59	15	0.045	0.47
<b>Q4DN-3-XY D71</b>	50	220-240	198	264	0.94	15	0.125	0.75
<b>Q4DN-3-XY D80</b>	50	220-240	198	264	1.05	15	0.125	0.84
<b>Q4DN-3-XY D90</b>	50	220-240	198	264	1.09	15	0.125	0.87
<b>Q4DN-3-XY D100</b>	50	220-240	198	264	0.95	15	0.125	0.76
<b>Q4DN-3-XY D112</b>	50	220-240	198	264	1.18	15	0.125	0.94
<b>Q4DN-3-XY D140</b>	50	220-240	198	264	1.41	15	0.125	1.13
<b>Q4DN-3-XY D160</b>	50	220-240	198	264	2.30	15	0.125	1.83
<b>Q4DN-3-XY D180</b>	50	220-240	198	264	2.73	15	0.125	2.10

**Abbreviations:**

MCA: Minimum Circuit Amps MFA: Maximum Fuse Amps FLA: Full Load Amps

**Notes:**

Voltage range: Units are suitable for use on electrical systems where voltage supplied to unit terminals is not below or above listed range limits.

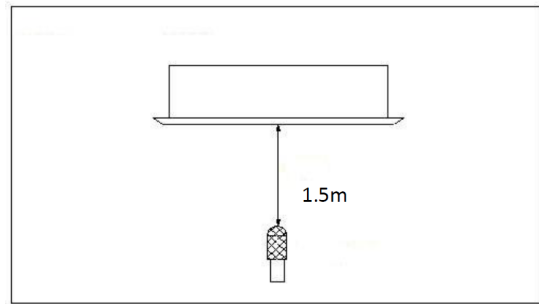
Maximum allowable voltage variation between phases is 2%.

Selection wire size based on the value of MCA.

MFA is used to select the circuit breaker and the ground fault circuit interrupter (earth circuit breaker).

## Overall

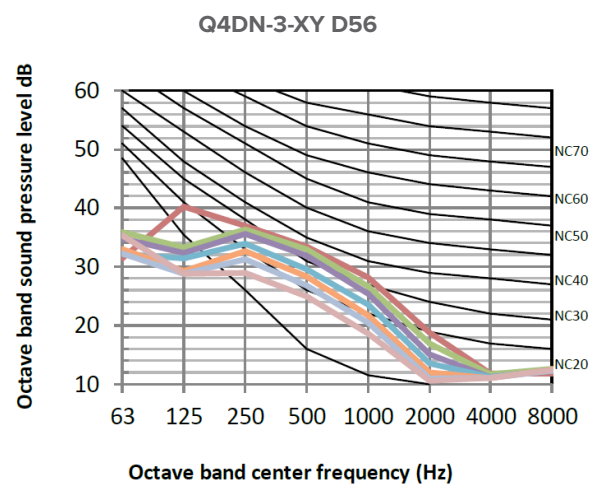
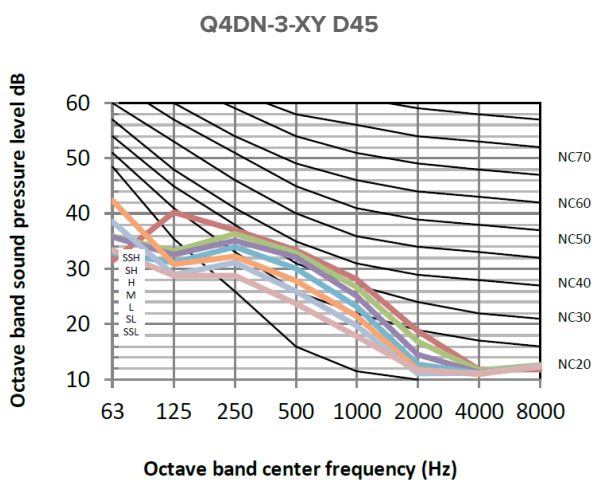
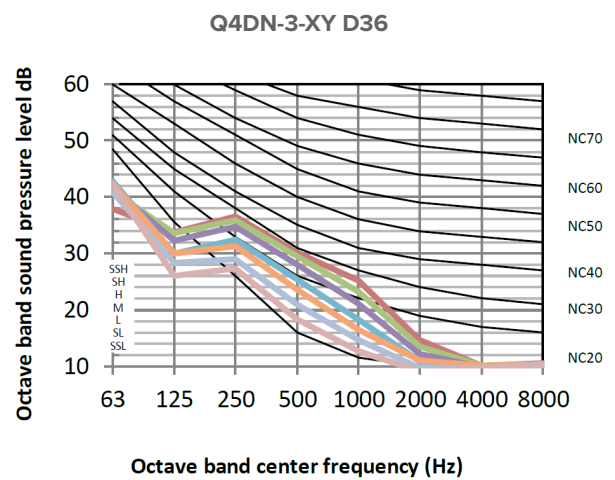
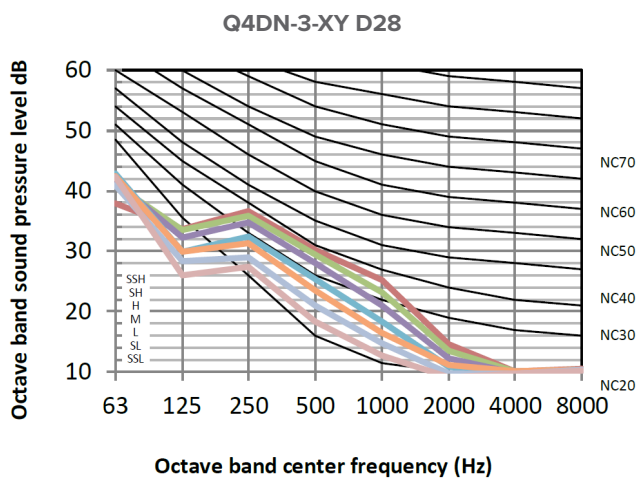
MODEL	Sound pressure levels dB						
	SSH	SH	H	M	L	SL	SSL
Q4DN-3-XY D28	30	29	28	27	26.5	26	25
Q4DN-3-XY D36	30	29	28	27	26.5	26	25
Q4DN-3-XY D45	33	32	31	30	29	28	27
Q4DN-3-XY D56	33	32	31	30	29	28	27
Q4DN-3-XY D71	37	36	34	33	32	30	29
Q4DN-3-XY D80	38	37	35	34	32	31	29
Q4DN-3-XY D90	38	37	35	34	32	31	29
Q4DN-3-XY D100	39	38	37	36	35	34	33
Q4DN-3-XY D112	41	40	38	37	36	34	33
Q4DN-3-XY D140	43	42	40	39	37	36	34
Q4DN-3-XY D160	48	46	44	43	41	39	37
Q4DN-3-XY D180	52	49	47	45	42	39	38



### Notes:

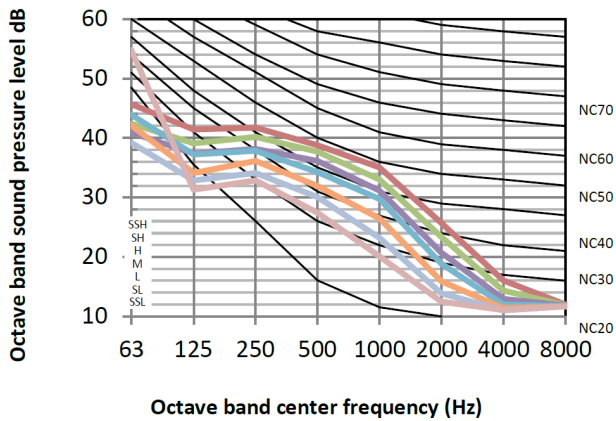
1. Sound pressure levels are measured 1.5m below the unit in a semi-anechoic chamber at 0 Pa. During in-situ operation, sound pressure levels may be higher as a result of ambient noise.

## Octave Band Levels

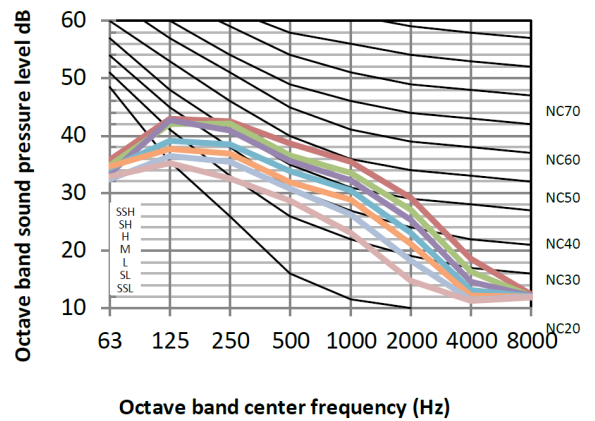


# Sound Level

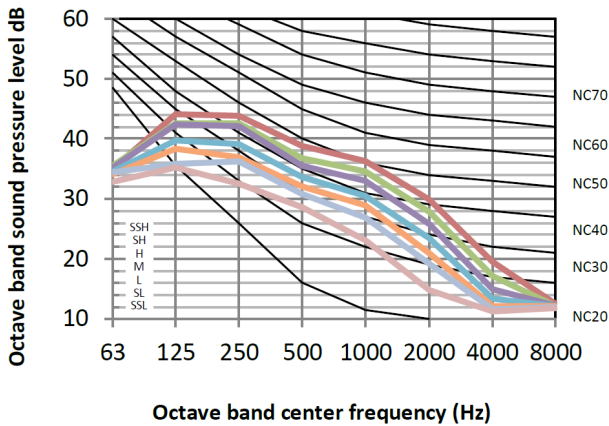
**Q4DN-3-XY D71**



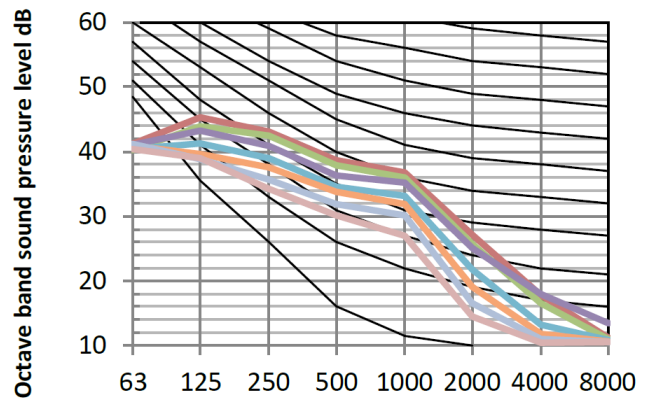
**Q4DN-3-XY D80**



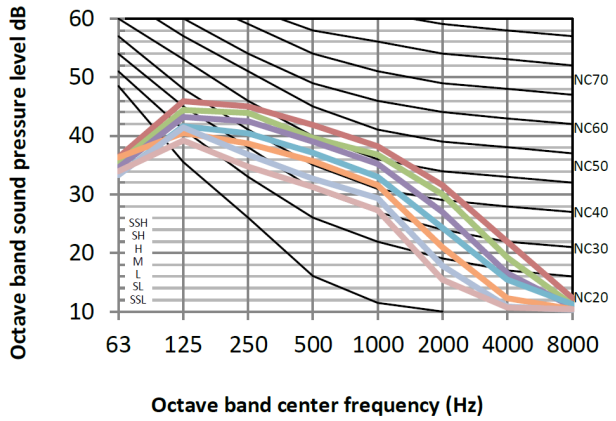
**Q4DN-3-XY D90**



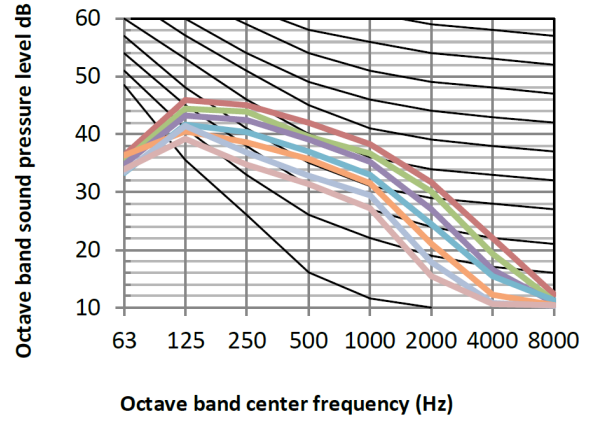
**Q4DN-3-XY D100**



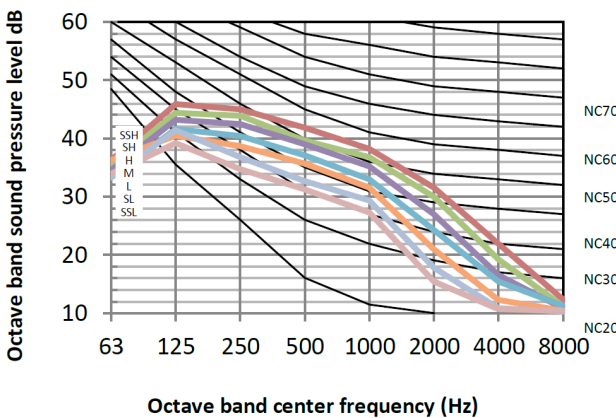
**Q4DN-3-XY D112**



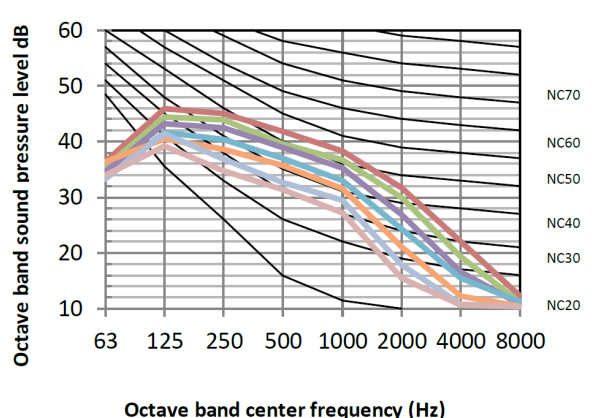
**Q4DN-3-XY D140**



**Q4DN-3-XY D160**



**Q4DN-3-XY D180**



# Temperature and Airflow Distributions

## Simulate condition

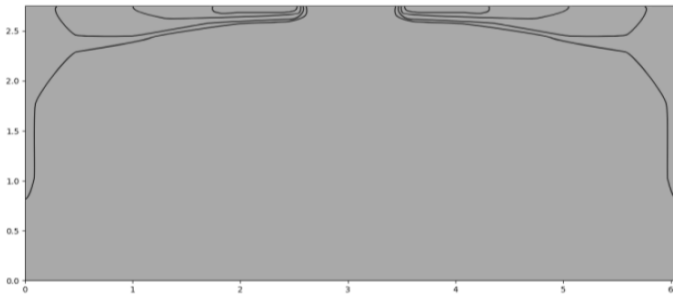
MODEL NAME	Room size (m)	Ceiling height (m)	Flow angle (Cooling/Heating)	Placing
Q4DN-3-XY D28	6×6	2.7	30°/65°	Center
Q4DN-3-XY D36	6×6	2.7	30°/65°	Center
Q4DN-3-XY D45	6×6	2.7	30°/65°	Center
Q4DN-3-XY D56	8×8	2.7	30°/65°	Center
Q4DN-3-XY D71	8×8	2.7	30°/65°	Center
Q4DN-3-XY D80	8×8	2.7	30°/65°	Center
Q4DN-3-XY D90	10×10	2.7	30°/65°	Center
Q4DN-3-XY D100	10×10	2.7	30°/65°	Center
Q4DN-3-XY D112	10×10	2.7	30°/65°	Center
Q4DN-3-XY D140	10×10	2.7	30°/65°	Center
Q4DN-3-XY D160	10×10	2.7	30°/65°	Center
Q4DN-3-XY D180	10×10	2.7	30°/65°	Center

Note:

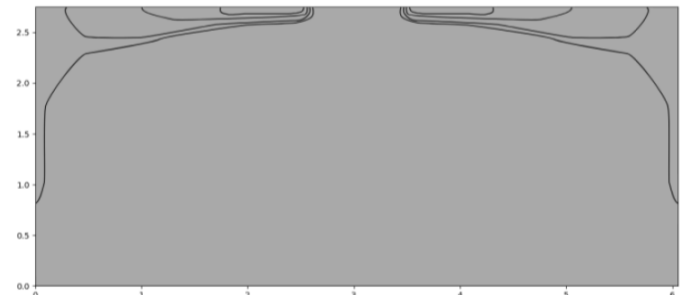
1. These figures and videos are based on software simulation. They show typical temperature and airflow distributions in the conditions above. In the actual installation, they may differ from these figures and videos under the influence of air temperature conditions, ceiling height, cooling/heating load, obstacles, etc.

## Airflow distributions - Cooling (after 300s)

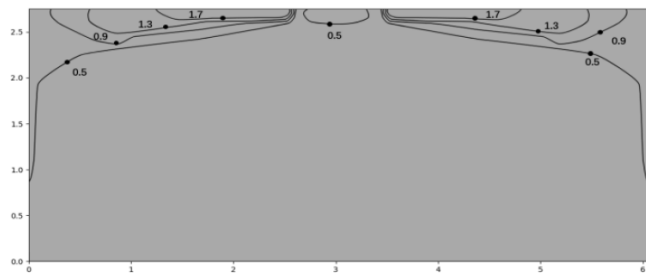
Q4DN-3-XY D28



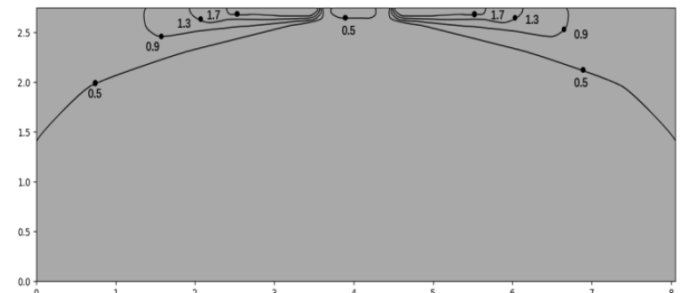
Q4DN-3-XY D36



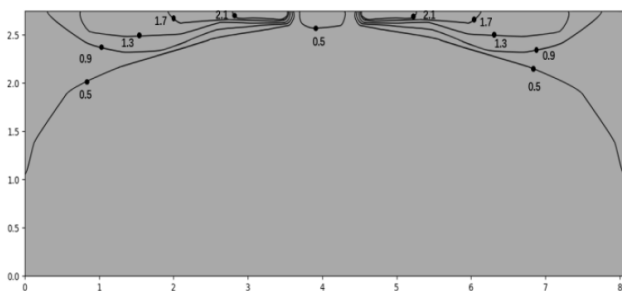
Q4DN-3-XY D45



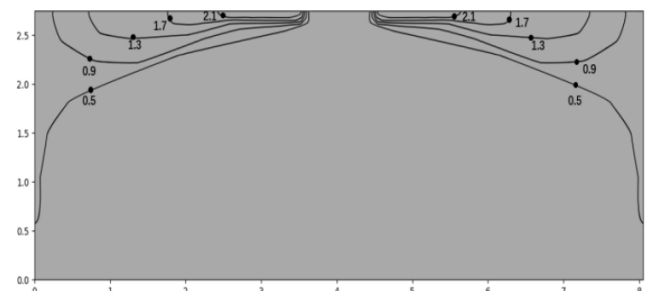
Q4DN-3-XY D56



Q4DN-3-XY D71



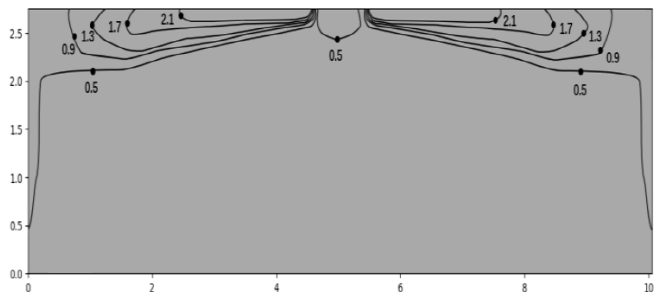
Q4DN-3-XY D80



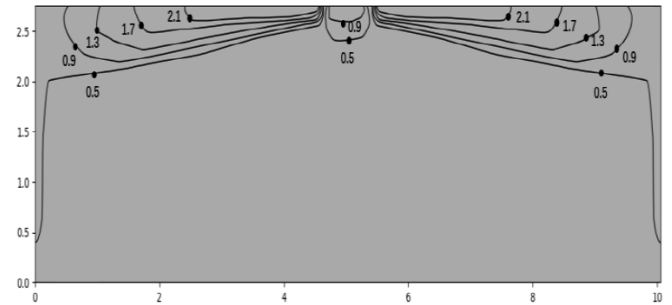


# Temperature and Airflow Distributions

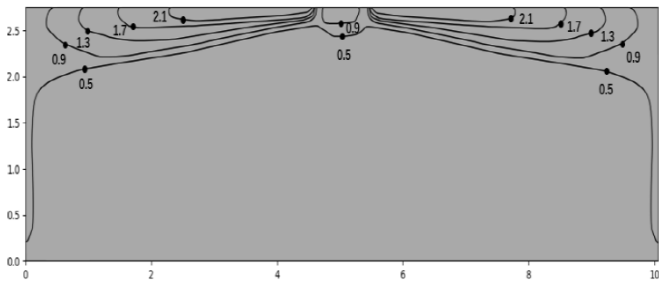
Q4DN-3-XY D90



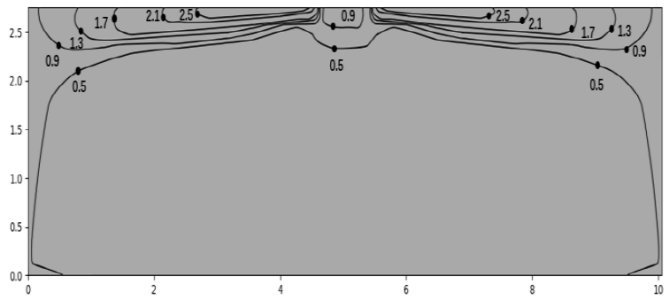
Q4DN-3-XY D100



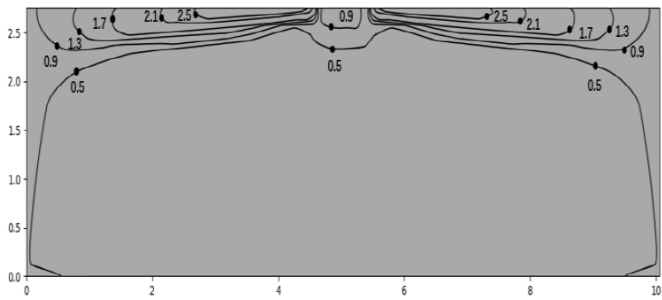
Q4DN-3-XY D112



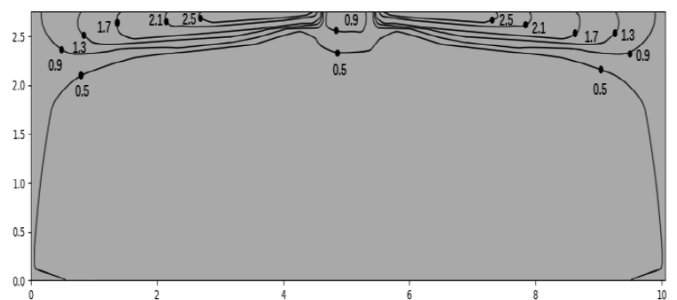
Q4DN-3-XY D140



Q4DN-3-XY D160

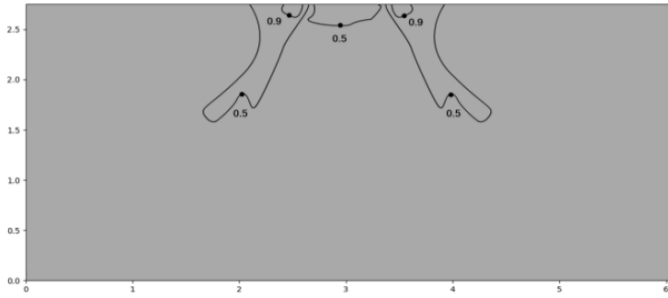


Q4DN-3-XY D180

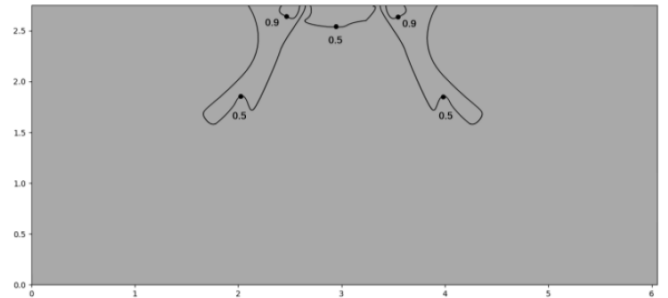


## Airflow distributions - Heating (after 300s)

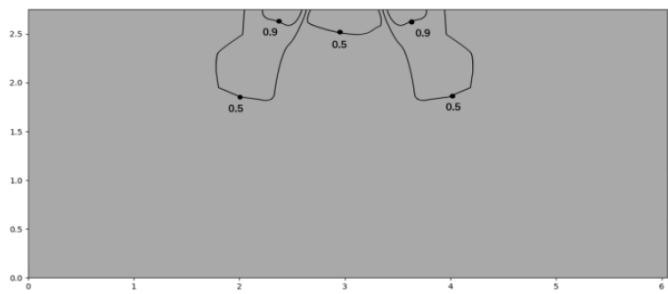
Q4DN-3-XY D28



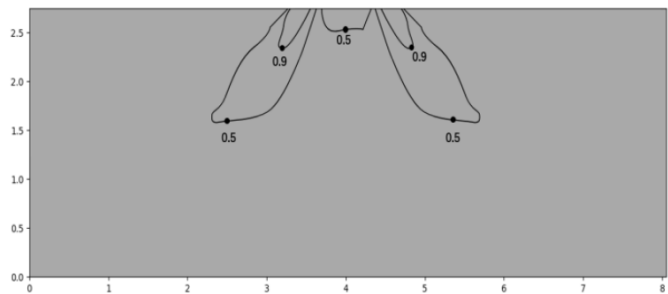
Q4DN-3-XY D36



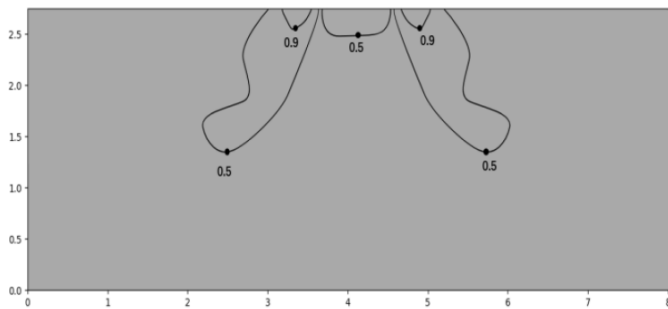
Q4DN-3-XY D45



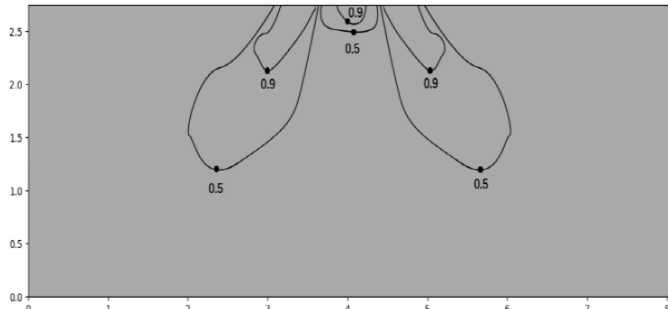
Q4DN-3-XY D56



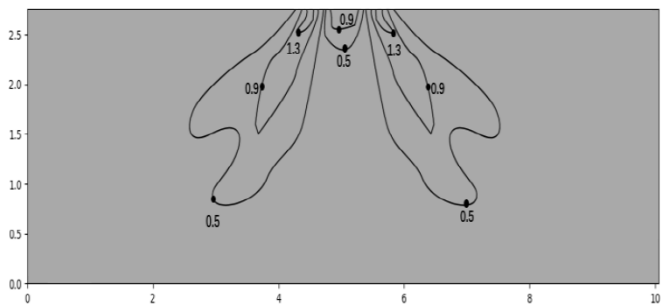
Q4DN-3-XY D71



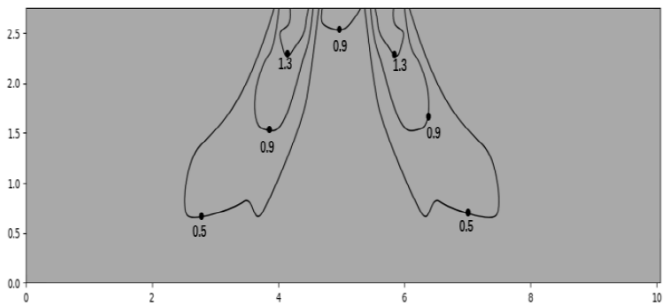
Q4DN-3-XY D80



Q4DN-3-XY D90

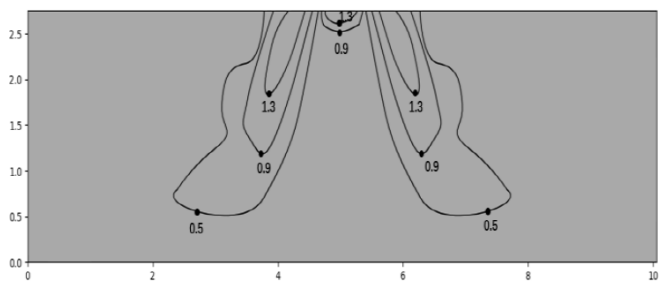


Q4DN-3-XY D100

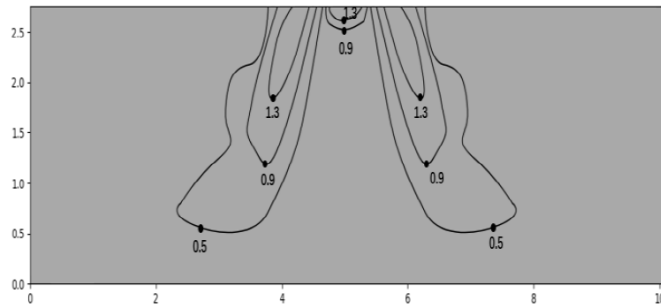


# Temperature and Airflow Distributions

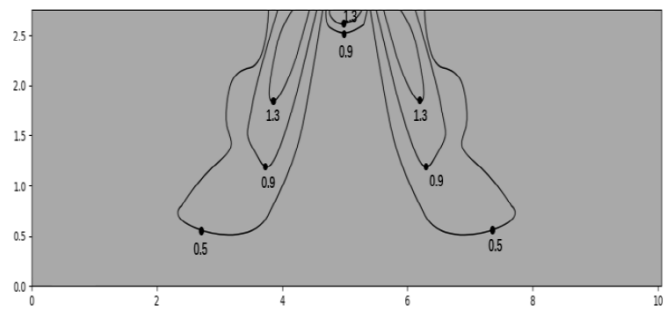
**Q4DN-3-XY D112**



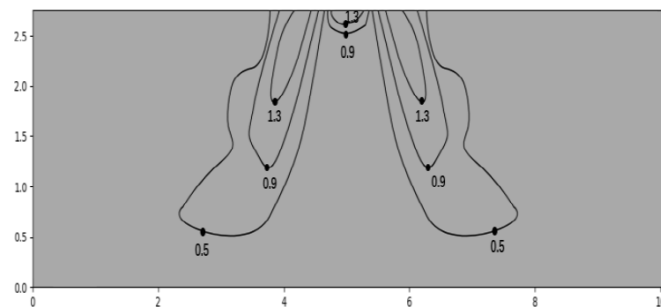
**Q4DN-3-XY D140**



**Q4DN-3-XY D160**

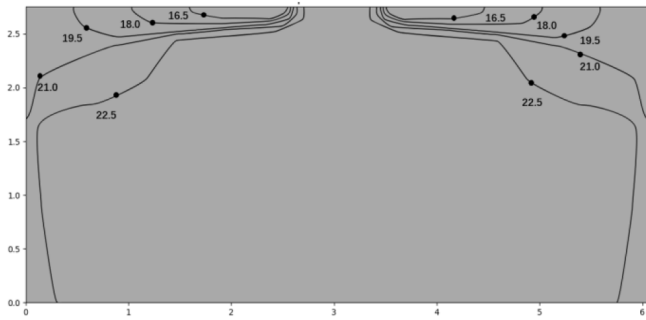


**Q4DN-3-XY D180**

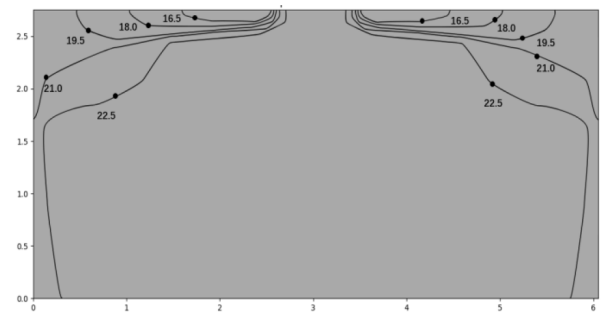


## Temperature distributions - Cooling (after 300s)

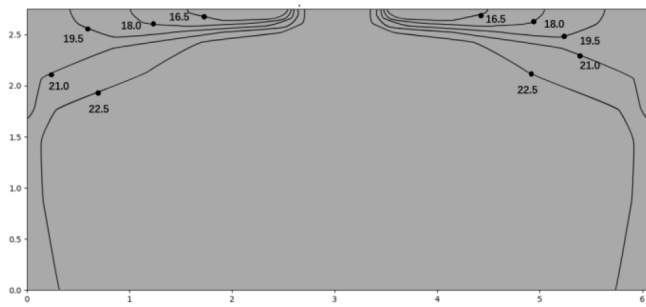
Q4DN-3-XY D28



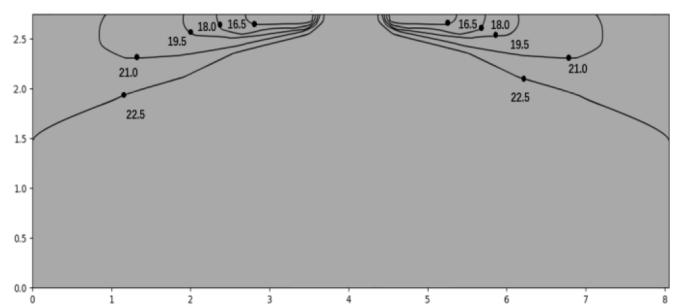
Q4DN-3-XY D36



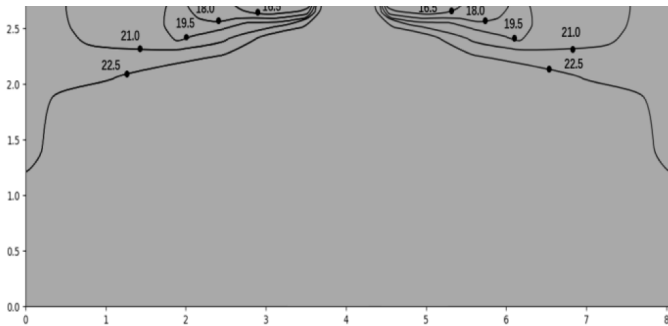
Q4DN-3-XY D45



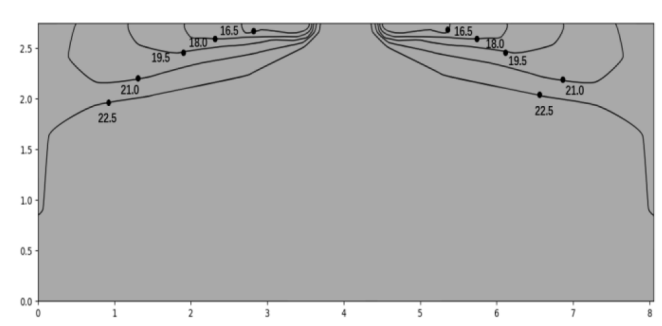
Q4DN-3-XY D56



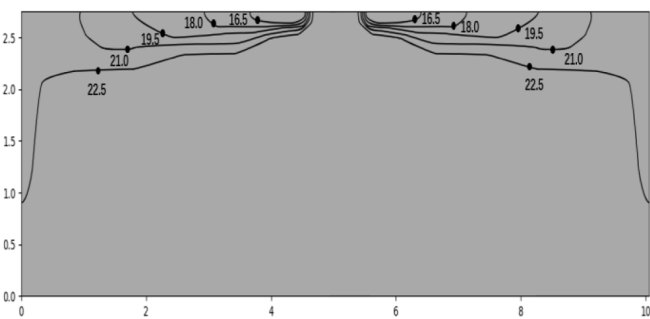
Q4DN-3-XY D71



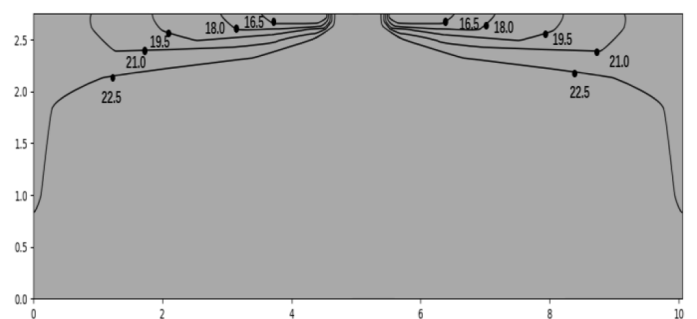
Q4DN-3-XY D80



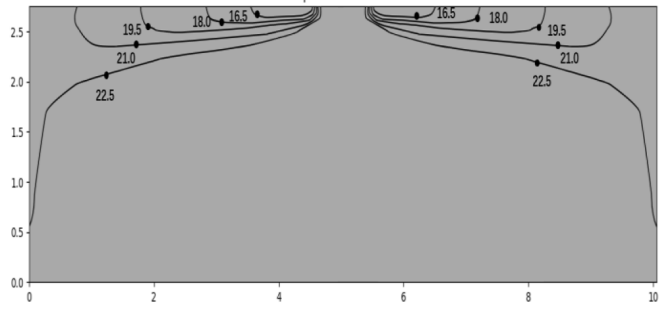
Q4DN-3-XY D90



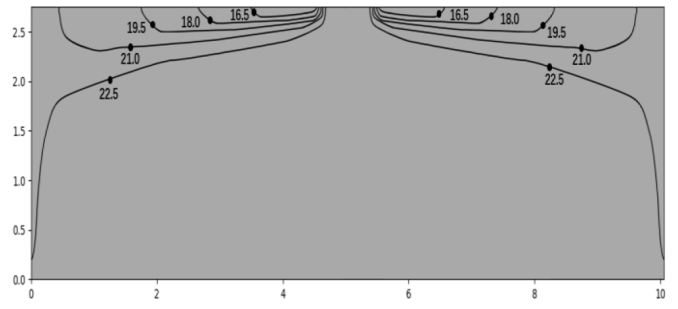
Q4DN-3-XY D100



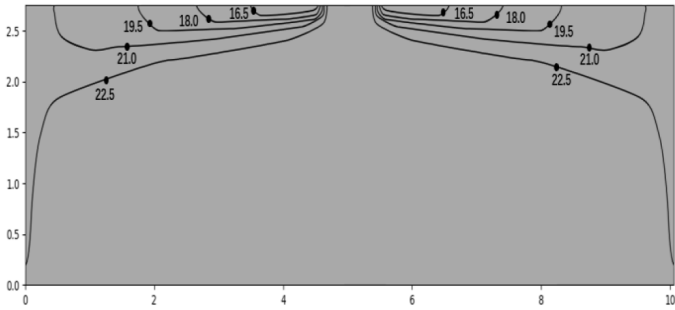
**Q4DN-3-XY D112**



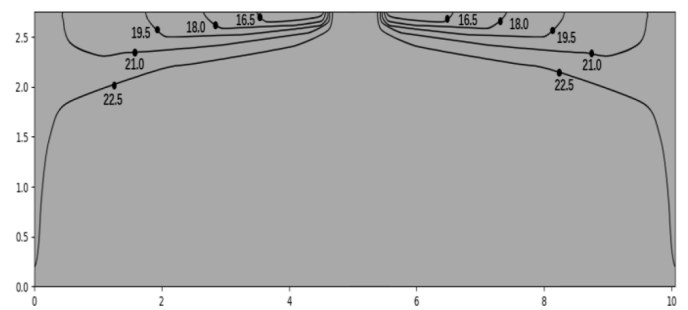
**Q4DN-3-XY D140**



**Q4DN-3-XY D160**

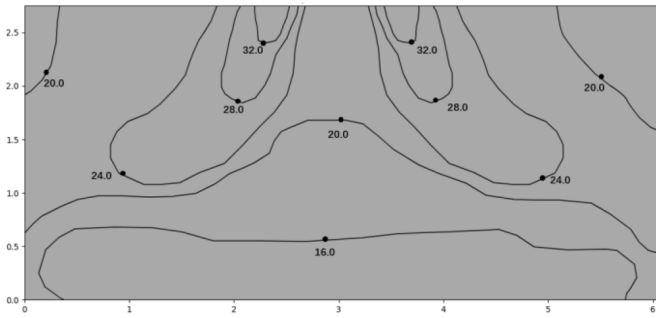


**Q4DN-3-XY D180**

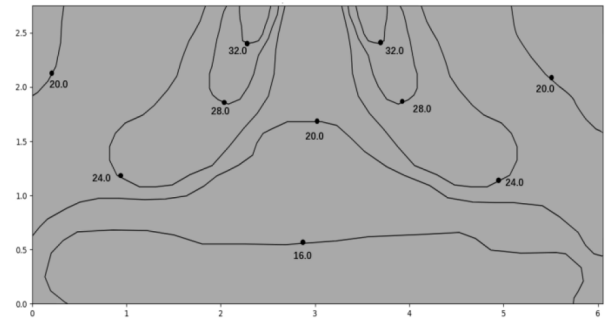


## Temperature distributions - Heating (after 300s)

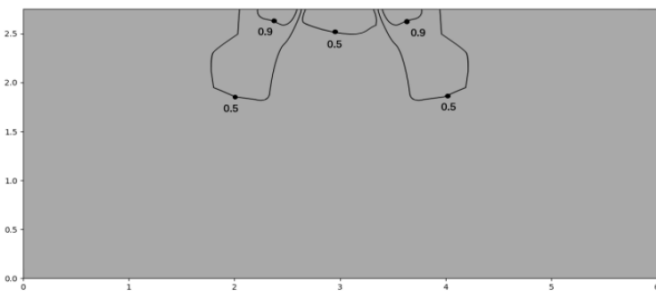
Q4DN-3-XY D28



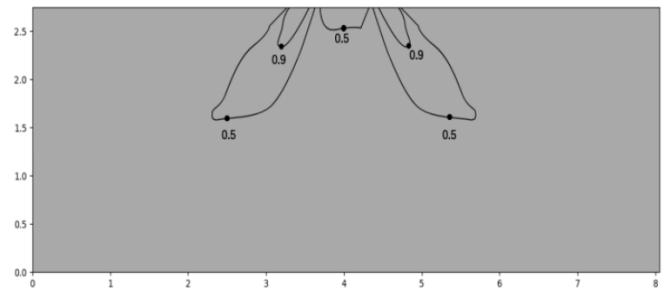
Q4DN-3-XY D36



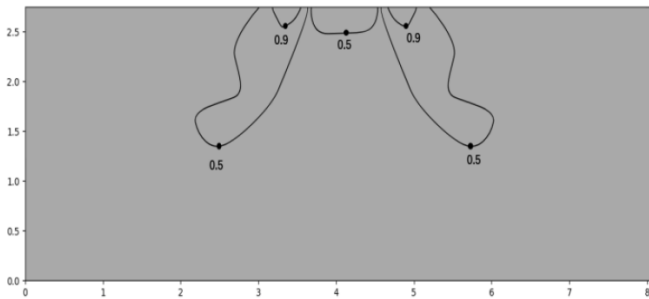
Q4DN-3-XY D45



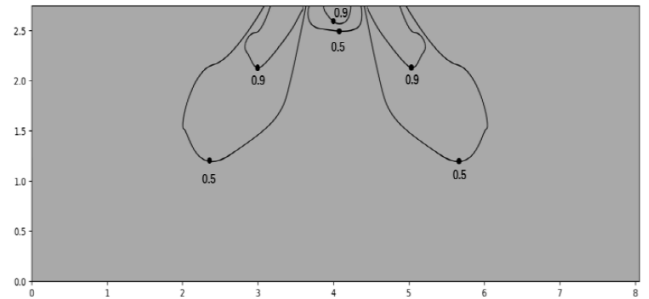
Q4DN-3-XY D56



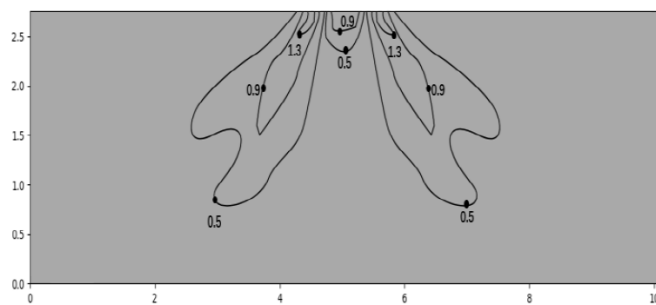
Q4DN-3-XY D71



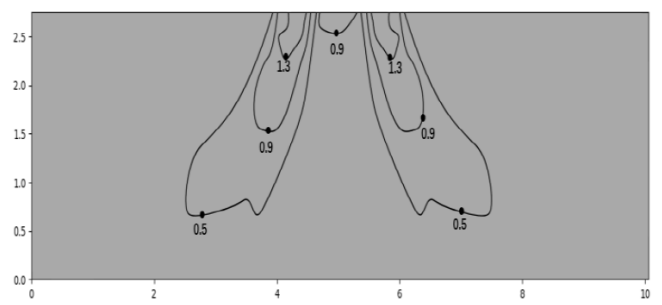
Q4DN-3-XY D80



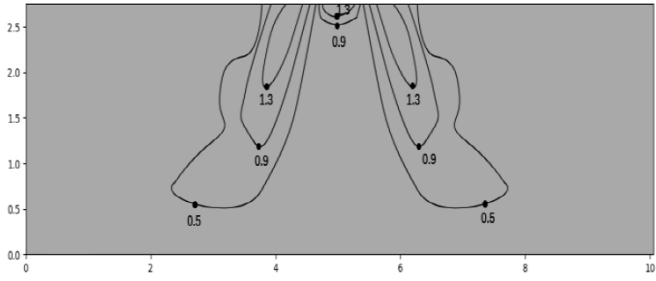
Q4DN-3-XY D90



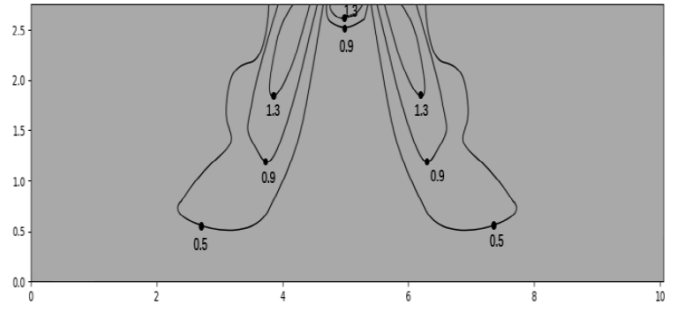
Q4DN-3-XY D100



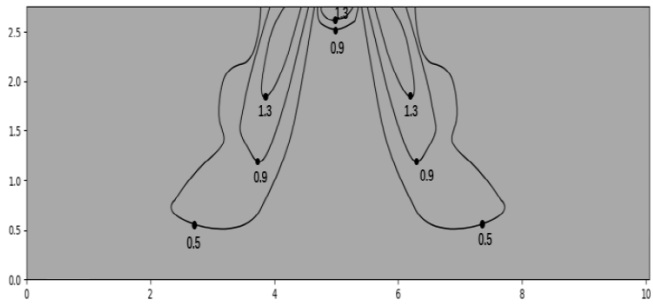
**Q4DN-3-XY D112**



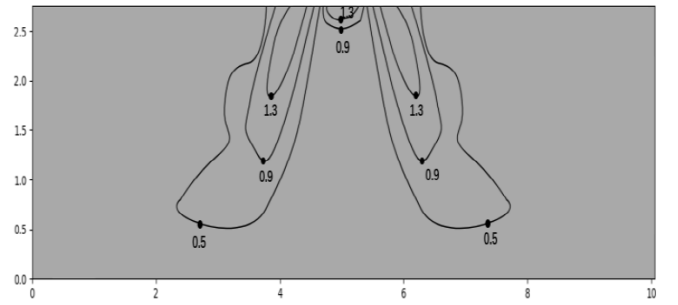
**Q4DN-3-XY D140**



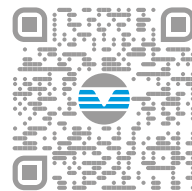
**Q4DN-3-XY D160**



**Q4DN-3-XY D180**



FOR 30 YEARS WE HAVE BEEN OFFERING  
SOLUTIONS FOR SUSTAINABLE COMFORT  
AND THE WELL-BEING OF PEOPLE AND  
THE ENVIRONMENT



sales and service

[www.clivet.com](http://www.clivet.com)

**MideaGroup**  
*humanizing technology*



**.CLIVET S.p.A**

Via Camp Lonc 25, Z.I. Villapaiera 32032 - Feltre (BL) - Italy  
Tel. +39 0439 3131 - [info@clivet.it](mailto:info@clivet.it)

**CLIVET GMBH**

Hummelsbütteler Steindamm 84,  
22851 Norderstedt, Germany  
Tel. +49 40 325957-0 - [info.de@clivet.com](mailto:info.de@clivet.com)

**Clivet Group UK LTD**

Units F5 & F6 Railway Triangle,  
Portsmouth, Hampshire PO6 1TG  
Tel. +44 02392 381235 -  
[Enquiries@Clivetgroup.co.uk](mailto:Enquiries@Clivetgroup.co.uk)

**CLIVET LLC**

Office 508-511, Elektrozavodskaya st. 24,  
Moscow, Russian Federation, 107023  
Tel. +7495 6462009 - [info.ru@clivet.com](mailto:info.ru@clivet.com)

**CLIVET MIDEAST FZCO**

Dubai Silicon Oasis (DSO) Headquarter Building,  
Office EG-05, P.O Box-342009, Dubai, UAE  
Tel. +9714 3208499 - [info@clivet.ae](mailto:info@clivet.ae)

**Clivet South East Europe**

Jarušćica 9b  
10000, Zagreb, Croatia  
Tel. +3851 222 8784 - [info.see@clivet.com](mailto:info.see@clivet.com)

**CLIVET France**

10, rue du Fort de Saint Cyr - 78180 Montigny le  
Bretonneux, France  
[info.fr@clivet.com](mailto:info.fr@clivet.com)

**Clivet Airconditioning Systems Pvt Ltd**

Office No.501 & 502,5th Floor, Commercial -I,  
Kohinoor City, Old Premier Compound, Off LBS  
Marg, Kiro Road, Kurla West, Mumbai  
Maharashtra 400070, India  
Tel. +91 22 30930200 - [sales.india@clivet.com](mailto:sales.india@clivet.com)

4-way cassette - Q4DN-3-XY D28 - D140 - BT23N009GB--00